



Eklutna Hydroelectric Project Fish and Wildlife Agreement

Cultural TWG Meeting
November 8, 2021



Meeting Agenda

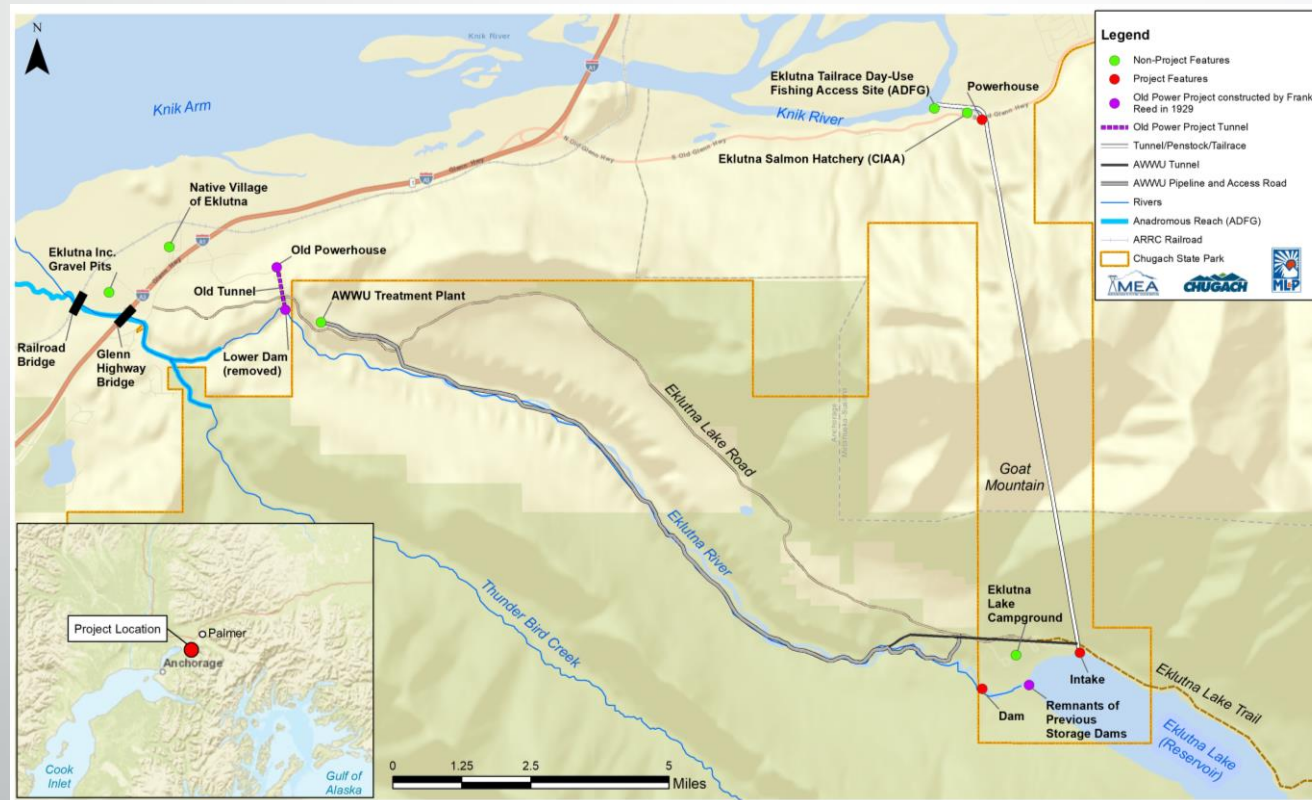
- Introductions
- Discuss need for confidentiality
- Discuss process for defining the Area of Potential Effect
- Outline study goals and proposed methods and obtain feedback from the TWG
- Review the study planning schedule and next steps

Confidentiality

- We recognize that some information regarding cultural resources may be sensitive and should not be publicly distributed.
- Therefore, substantive portions of the data gathering and reporting process for cultural resources will remain **confidential** and only be discussed amongst the members of the Cultural TWG and parties to the 1991 fish and wildlife agreement.

Area of Potential Effect (APE)

We will consult with the cultural TWG during study planning to reach agreement on an appropriate APE for the project.



Goals

- Re-evaluate the Eklutna Hydroelectric Project components to determine if they are still considered eligible for the National Register of Historic Places
- Identify and evaluate other historic resources within the APE, potentially including:
 - Old storage dam remnants at the lake outlet
 - Lakeside trail (other potential military-related historic resources around the lake?)
 - Possible old cabin/building remains
 - New Glenn Highway and railroad bridges
- Identify any archaeological resources within the APE
- Identify any traditional use areas within the APE (in consultation with NVE)
- Continue to coordinate with the Native Village of Eklutna regarding their Traditional Ecological Knowledge (TEK) assessment of the Eklutna River

Methods

- Consult with NVE regarding any known archaeological resources or traditional use areas within the APE
- Conduct a desktop analysis of existing information
- If existing data is lacking, conduct supplemental site-specific surveys as needed to document areas of interest and the associated resources

Study Planning Schedule

- **December 2021** – Cultural TWG meeting to agree upon appropriate APE
- **2/11/22** – Distribute draft study plan to cultural TWG and parties for review
- **3/11/22** – Comments due
- **Week of 3/21/22** – Cultural TWG meeting to discuss comments
- **4/1/22** – Distribute proposed final study plans to parties for concurrence
- **4/15/22** – Deadline to receive state concurrence letters and then submit to AEA as the governor's representative for feedback
- **4/29/22** – Deadline to receive federal concurrence letters and any feedback from AEA
- **5/13/22** – Finalize study plans

Questions

?